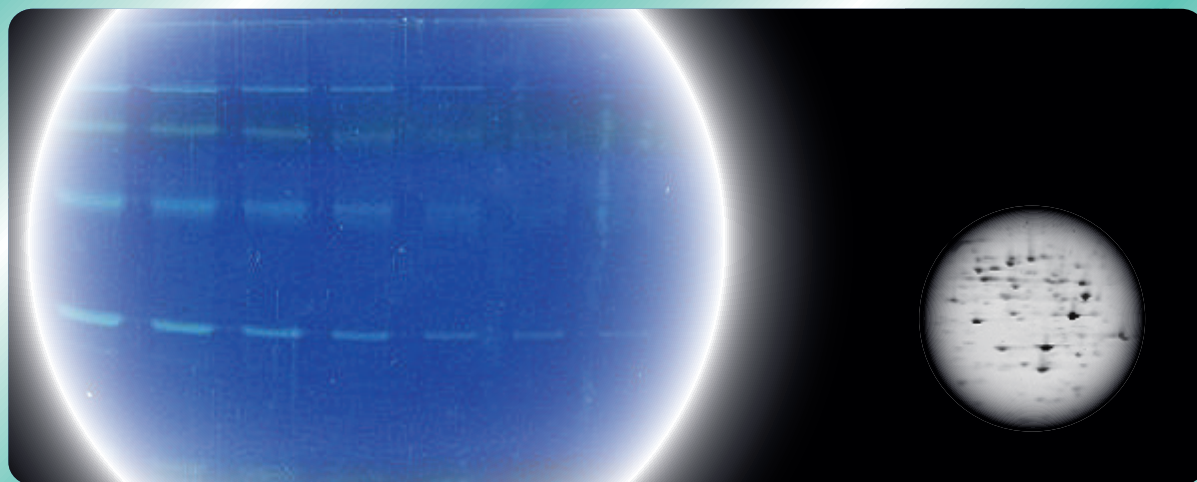


Fluorescent stain solution for protein electrophoresis

LuMint Stain KANTO



Kanto Reagents



LuMint Stain KANTO is a highly sensitive, speedy and ready-to-use fluorescent stain solution for protein in polyacrylamide gels.

After electrophoresis, a gel stained with LuMint Stain KANTO can be visualized with UV light. Proteins are detected as mint green bands or spots.

Only 35 minutes!!

Detect with UV!!

Ready-to-use!!

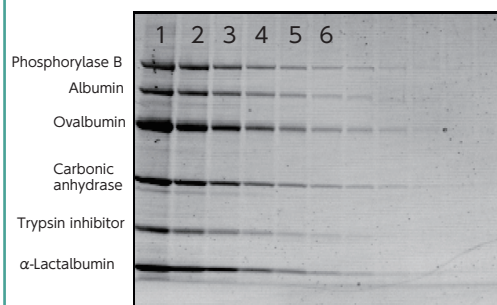
**Compatible with
Native-PAGE, WB and MS !!**

Without methanol !!

LuMint Stain KANTO

[Sample]: Protein standard marker (two-fold serial dilutions)
[1 lane] From top to order, 670, 830, 1470, 830, 800, 1160
[8 lane] From top to order, 5.2, 6.5, 11.5, 6.5, 6.3, 9.1
(ng/band)

[Protocol] 1. SDS-PAGE (+2ME)
2. Stained with LuMint Stain KANTO for 30 min.
3. Rinsed with D.W. for 5 min.
4. Detect with UV transilluminator (312nm)
5. Photo by CCD capture (Posi)



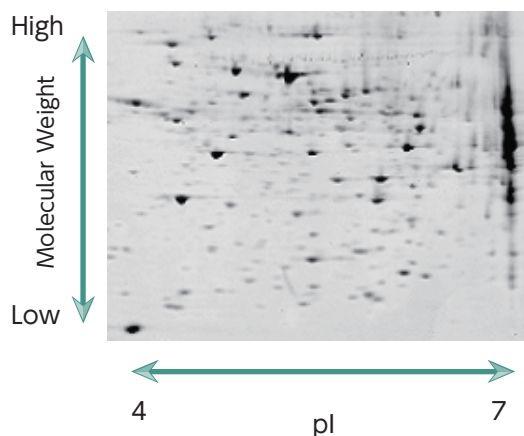
Product No.	Product Name	Grade	Package size
24055-08	LuMint Stain KANTO	for electrophoresis	500 mL

(LuMint Stain KANTO is co-developed with AIST)

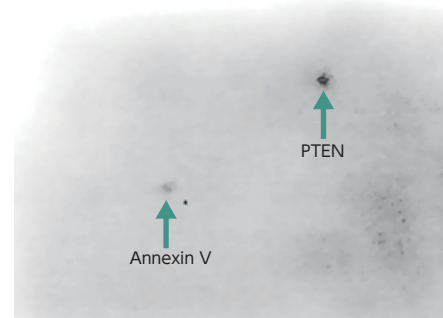
◀ Protocol ▶

- 1 Separate proteins by gel electrophoresis (SDS-PAGE, 2D-PAGE, Native-PAGE, etc).
- 2 Put the gel in a brown tray with 50 ml of this reagent at room temperature. (This reagent is supplied as a 1X ready-to-use staining reagent.)
- 3 Stain Proteins with this reagent for 30 min on shaking at room temperature. (Staining in 60 ~ 90 minutes is more sensitive than 30 minutes staining.)
- 4 Rinse the gel with water to remove this reagent. (Wash the gel 1 time for 5 min in H₂O on a shaking platform.)
- 5 Detect proteins using a UV light (312nm~365nm).

◀ Application ▶



Sample : Mouse liver soluble proteins
 Method : 2D PAGE
 Staining : LuMint Stain KANTO




Proteins	M.W.(kDa)	pI
PTEN	54	5.94
Annexin V	36	4.83

Sample: Mouse liver soluble proteins
 Method: Western blotting (PVDF membrane)
 after staining.
 Staining :LuMint Stain KANTO

◀ Related products ▶

Product No.	Product Name	Package size
01076-08	30(w/v)% Acrylamide/Bis mixed solution(37.5:1)	500 mL
36507-79	Running Buffer Solution(10×) for SDS-PAGE	1 L
36535-96	Rapid CBB KANTO	1 Kit
36533-79	Rapid CBB KANTO 3S	1 L

 **KANTO CHEMICAL CO., INC.**
REAGENT DIVISION

East Muromachi Mitsui BLDG, 2-1, Nihonbashi Muromachi 2-chome,
 Chuo-ku, Tokyo, 103-0022, JAPAN

Telephone +81-3-6214-1092

Telefax +81-3-3241-1053

<http://www.kanto.co.jp> E-mail: kanto-61@gms.kanto.co.jp